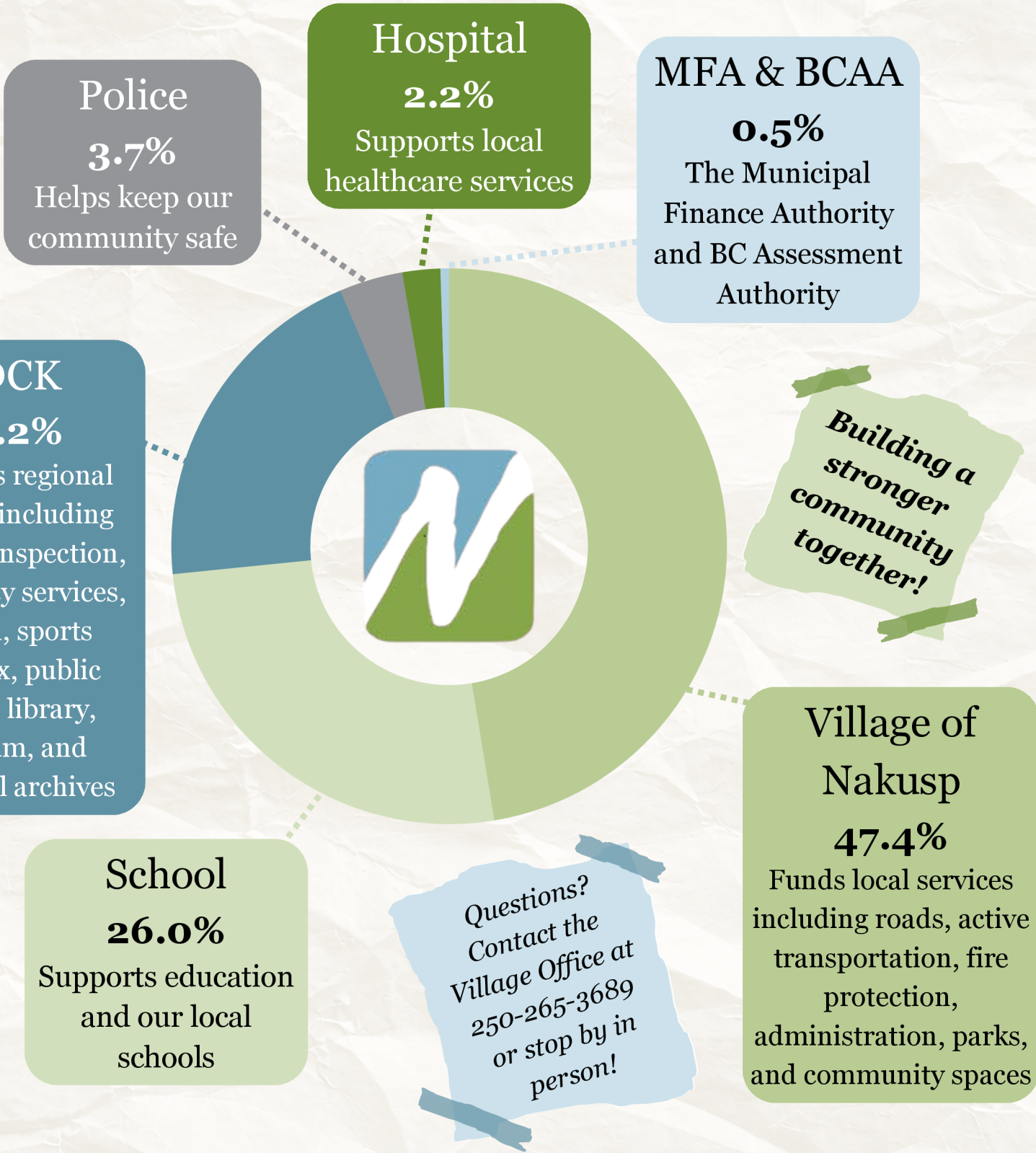




# Where Your 2026 Property Taxes Go



Understanding the distribution of your local property taxes



Out of every \$100 in property taxes:

\$47.40 goes to Village services

\$3.70 goes to the police

\$26.00 goes to schools

\$2.20 goes to the hospital

\$20.20 goes to the RDCK

\$0.50 goes to MFA & BCAA